



### THE ISSUE

**1 IN 7 BIRTHS** IS AFFECTED BY **GESTATIONAL DIABETES (GDM)**

### WHAT DOES THIS MEAN?

**1 IN 2 WOMEN**

WITH GDM WILL DEVELOP TYPE 2 DIABETES WITHIN 5 TO 10 YEARS AFTER DELIVERY

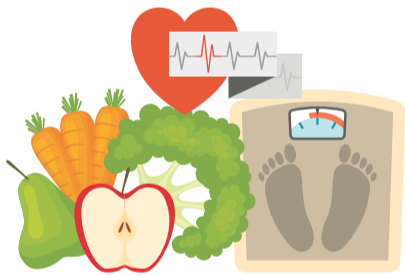


### THE CHALLENGE



PREGNANT WOMEN REQUIRE IMPROVED ACCESS TO SCREENING, CARE AND EDUCATION TO ACHIEVE POSITIVE HEALTH OUTCOMES FOR MOTHER AND CHILD

### SOLUTIONS



HEALTH AND NUTRITION BEFORE AND AFTER PREGNANCY AND EARLY CHILDHOOD MUST BE INCLUDED IN **TYPE 2 PREVENTION STRATEGIES**



HEALTH PROMOTION AND EARLY DETECTION OF DIABETES AND GDM MUST BE PART OF ALL ANTENATAL CARE VISITS



HEALTHCARE WORKERS SHOULD BE TRAINED IN THE IDENTIFICATION, TREATMENT, MANAGEMENT AND FOLLOW UP OF DIABETES DURING PREGNANCY

**ACT TODAY TO CHANGE TOMORROW**  
[www.worlddiabetesday.org](http://www.worlddiabetesday.org)



International  
Diabetes  
Federation

LANCET LABORATORIES SUPPORTS WORLD DIABETES DAY

**14 NOVEMBER**

Johannesburg | (011) 358 0800    Durban | (031) 308 6500    Rustenburg | (014) 597 8500    Cape Town | (021) 673 1700    Kimberley | (053) 836 4460  
Pretoria | (012) 483 0100    Polokwane | (015) 294 0400    Nelspruit | (013) 745 9000    Bloemfontein | (051) 410 1700

0861 LANCET (526238)

